

Innovative Design

Material Development

WHARTON

—— 沃顿岩板.瓷砖 ——

Wharton.

公司围绕材料研发、数字喷墨技术、表面结构设计、及工程应用体系建设构建了完整的新材料产业能力，并广泛服务于地产项目、商业空间、公共建筑及高端定制领域。

Has Built A Comprehensive New Material Industrial System. We widely serve real estate projects, commercial spaces, public buildings and high-end customization sectors.



NATURAL

MATERIAL

Taking "R&D-driven material innovation" as our core philosophy, we continuously optimize product performance and spatial expressive capability, and promote the upgrading of building envelopes from traditional decorative materials to systematic material language.

以"研发驱动材料创新"为核心理念，通过持续优化产品性能与空间表达能力推动建筑表皮从传统装饰材料向系统化材料语言升级。



ABOUT US.

关于我们.

公司专注新型饰面材料研发，以数字喷墨与表面结构设计为核心，
为地产、商业及高端空间提供系统化饰面解决方案。

The company focuses on the R&D of
new decorative surface materials. Centering on digital inkjet and surface
structure design, it provides systematic surface finishing solutions for real
estate, commercial and high-end spaces.

Wharton

Innovative Design

Material Development

Mineral Mood

矿物氛围

01

Mineral Mood

矿物氛围



Rock Grey Travertine

岩灰洞

规格: 1200x3000mm

Size

厚度: 2.5-3mm

Thickness

面别: 一石一面 (1 Stone 1 Face)

Surface

型号: STX-ST-TR1-017

Model



Mineral Mood

矿物氛围



Floating Shadow Travertine

浮影洞

规格: 1200x3000mm

Size

厚度: 2.5-3mm

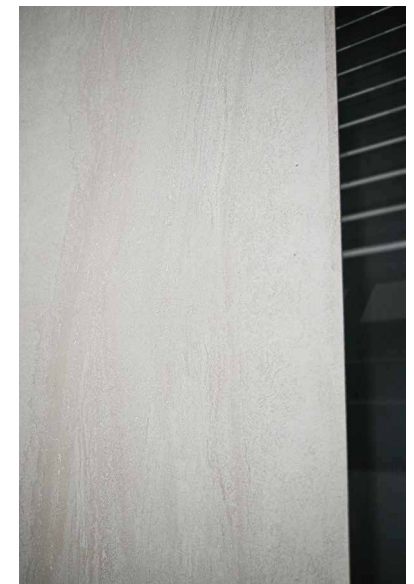
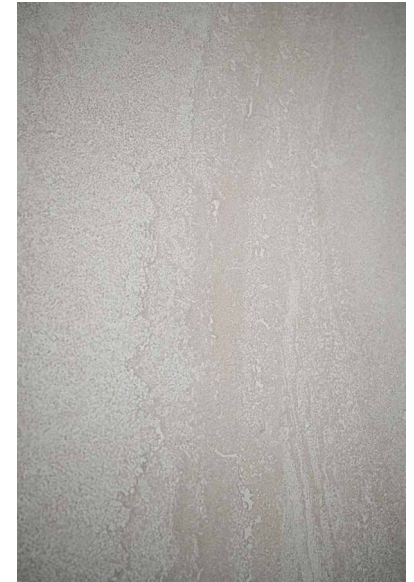
Thickness

面别: 一石两面 (1 Stone 2 Face)

Surface

型号: STX-ST-TR1-022

Model



Mineral Mood

矿物氛围



Ink Black Travertine

墨岩洞石

规格: 1200x3000mm

Size

厚度: 2.5-3mm

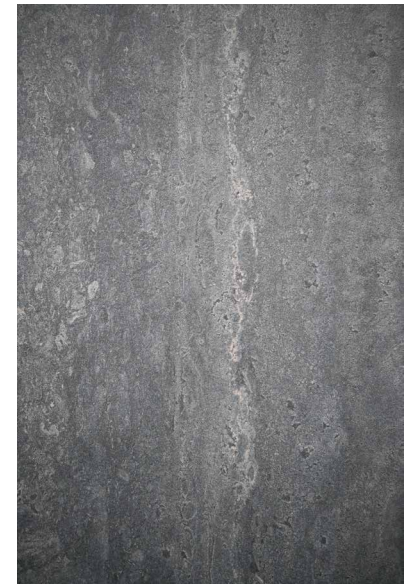
Thickness

面别: 一石三面 (1 Stone 3 Face)

Surface

型号: STX-ST-TR1-021

Model



Mineral Mood

矿物氛围



Broken Shadow Rock

碎影岩

规格: 1200x3000mm

Size

厚度: 2.5-3mm

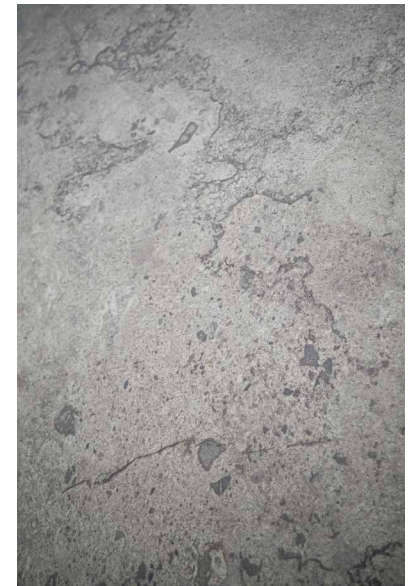
Thickness

面别: 一石四面 (1 Stone 4 Face)

Surface

型号: STX-ST-TR1-024

Model



Mineral Mood

矿物氛围



Lane Crawford Travertine

连卡佛洞石(大洞面)

规格: 1200x3000mm

Size

厚度: 3-3.3mm

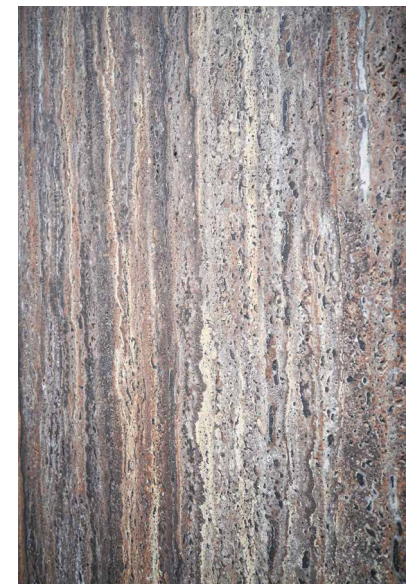
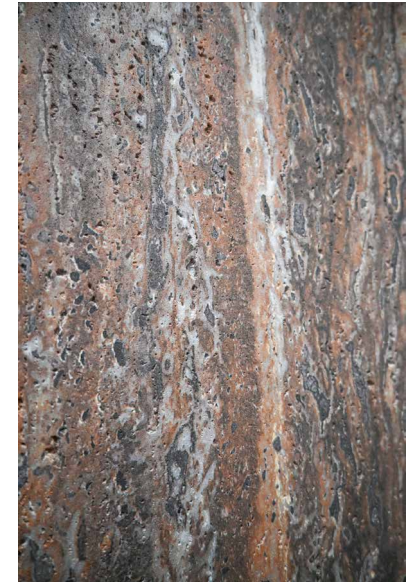
Thickness

面别: 一石三面 (1 Stone 3 Face)

Surface

型号: STX-ST-TR2-019

Model



Mineral Mood

矿物氛围



Lane Crawford Travertine

连卡佛洞石(微洞面)

规格: 1200x3000mm

Size

厚度: 2.5-3mm

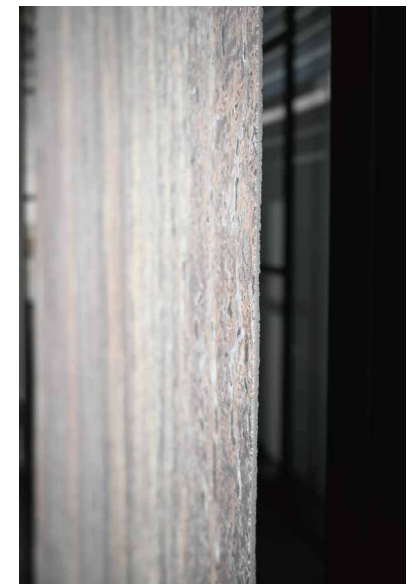
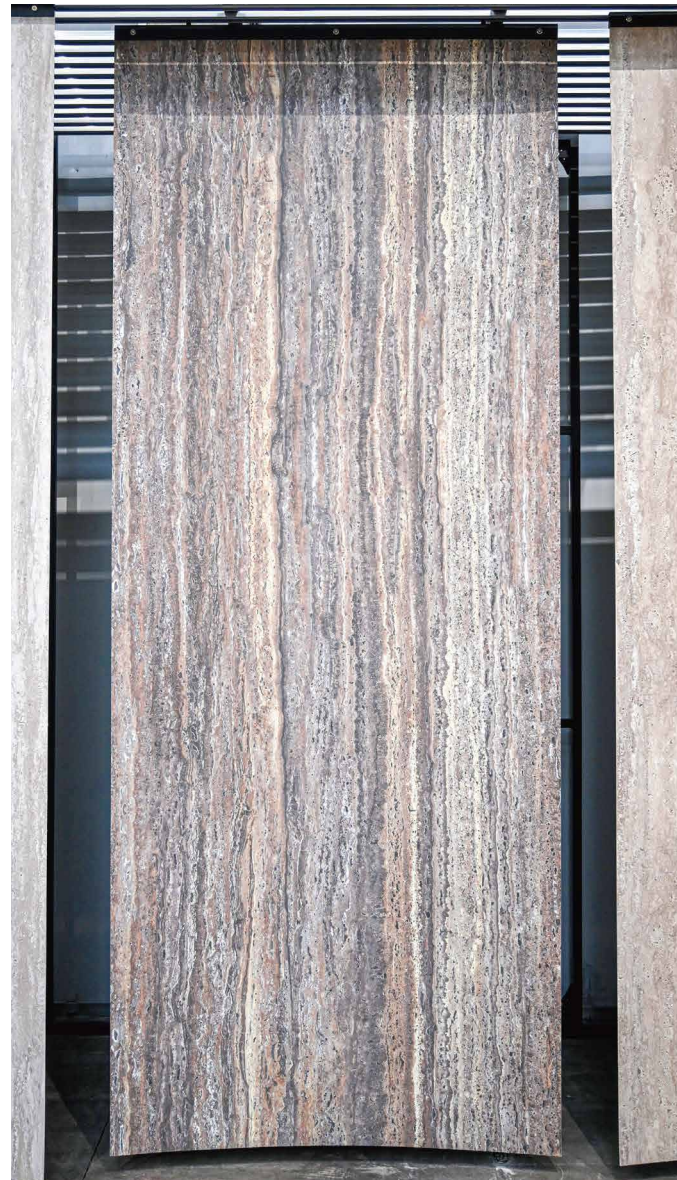
Thickness

面别: 一石三面 (1 Stone 3 Face)

Surface

型号: STX-ST-TR2-019

Model



Mineral Mood

矿物氛围



Crimson Red Travertine

绯红洞石

规格: 1200x3000mm

Size

厚度: 2.5-3mm

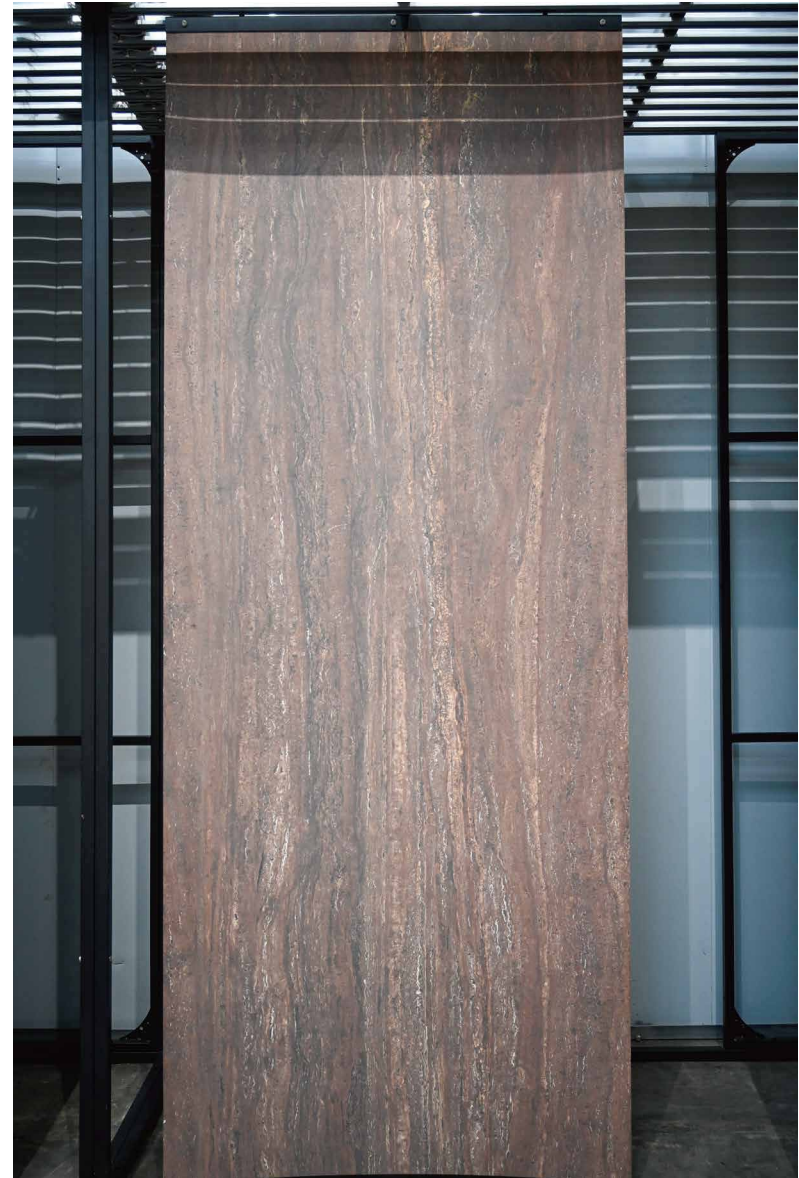
Thickness

面别: 一石三面 (1 Stone 3 Face)

Surface

型号: STX-ST-TR1-020

Model



Mineral Mood

矿物氛围



Rock Grey Travertine

浮光洞

规格: 1200x3000mm

Size

厚度: 2.5-3mm

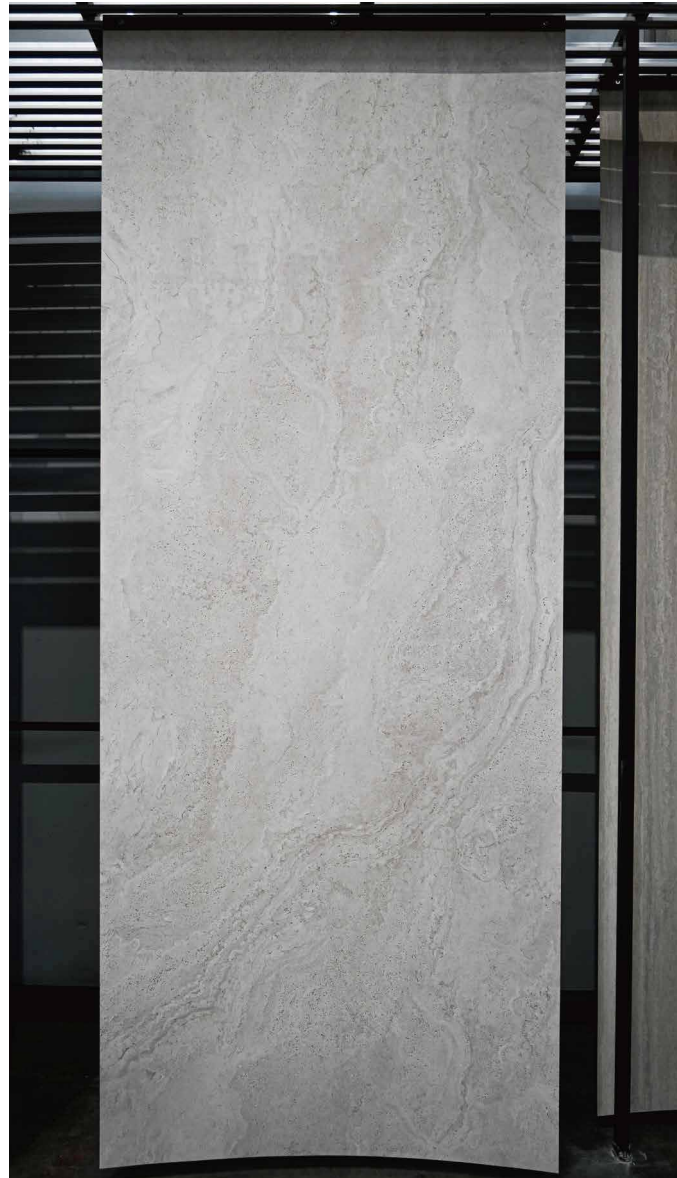
Thickness

面别: 一石两面 (1 Stone 2 Face)

Surface

型号: STX-ST-TR1-023

Model



Mineral Mood

矿物氛围



Crushed Rock

碎石岩

规格: 1200x3000mm

Size

厚度: 2.5-3mm

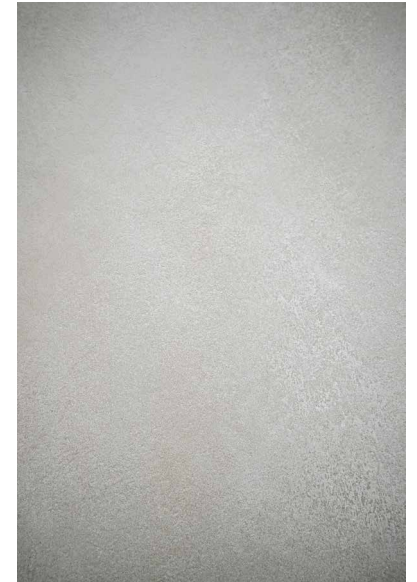
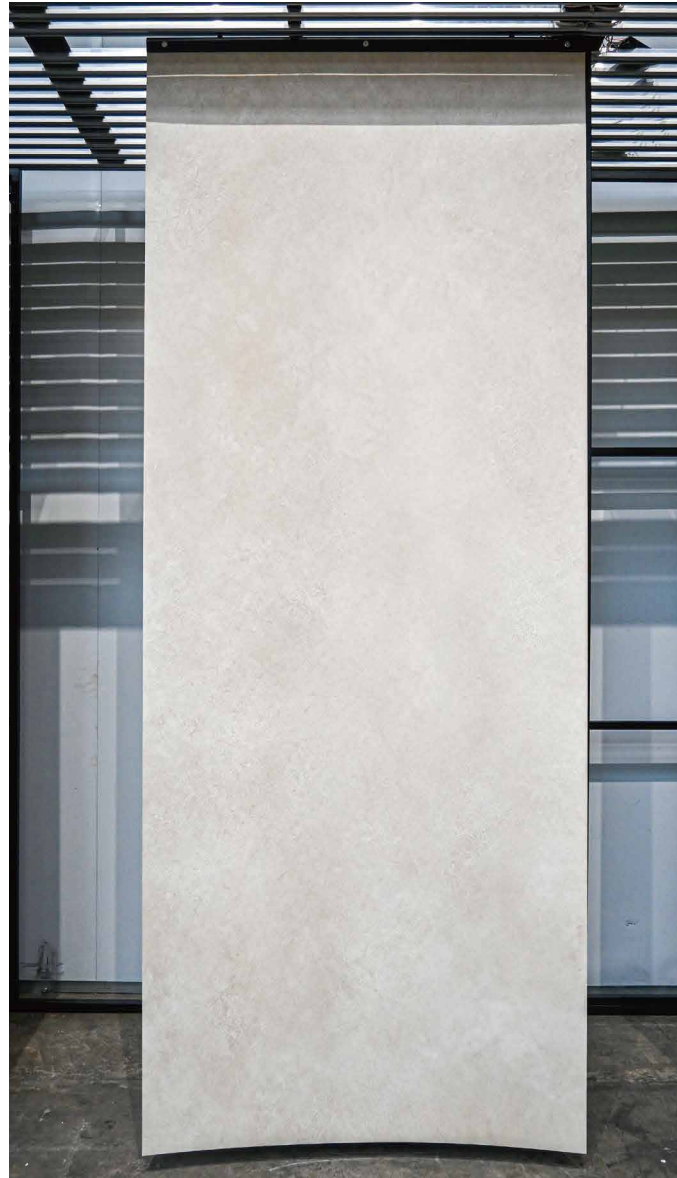
Thickness

面别: 一石一面 (1 Stone 1 Face)

Surface

型号: STX-ST-TR1-025

Model



Mineral Mood

矿物氛围



Italian Linear Wood Stone

意式线木石

规格: 3000x1200mm

Size

厚度: 2.5-3mm

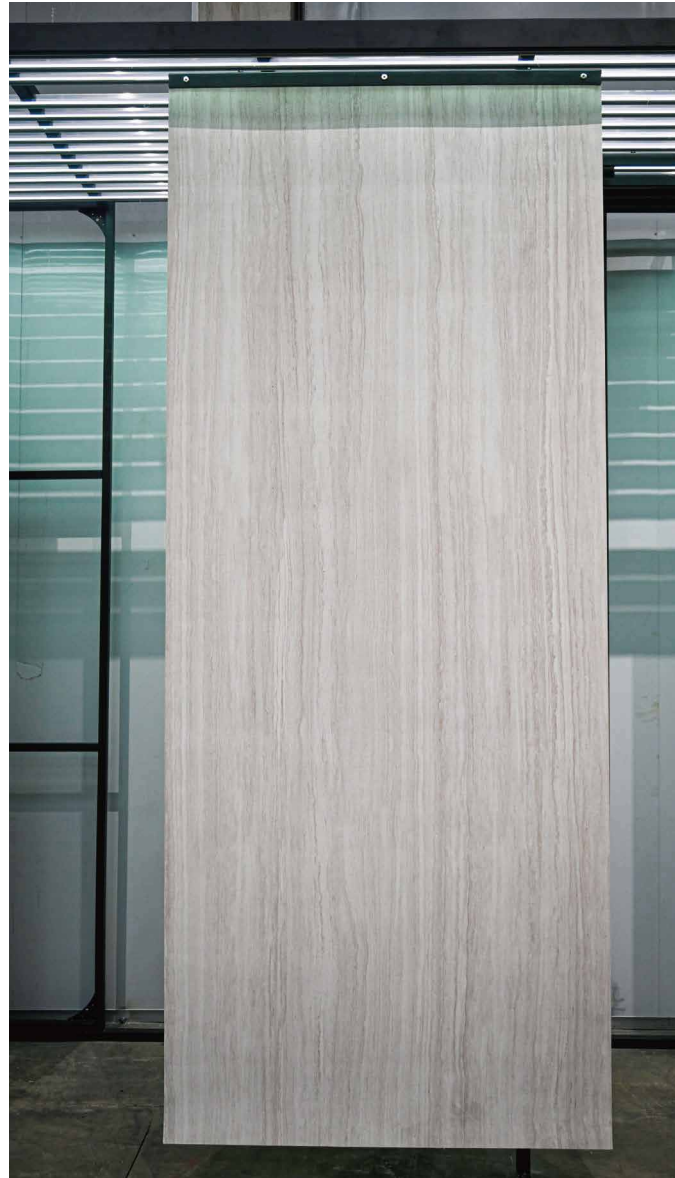
Thickness

面别: 一石一面 (1 Stone 1 Face)

Surface

型号: STX-ST-TR1-044

Model



Mineral Mood

矿物氛围

Weave Shadow White
Travertine

Weave Shadow White
Travertine

Weave Shadow Brown
Travertine



织影白洞
STX-ST-TR1-003

织影米白洞
STX-ST-TR1-001

织影棕洞
STX-ST-TR1-002

规格: 1200x3000mm
Size

厚度: 2.5-3mm
Thickness

面别: 一石三面 (1 Stone 3 Face)
Surface



Mineral Mood

矿物氛围

Roman White
Travertine

Roman Yellow
Travertine

Roman Coffee
Travertine



罗马白洞
STX-ST-TR1-014

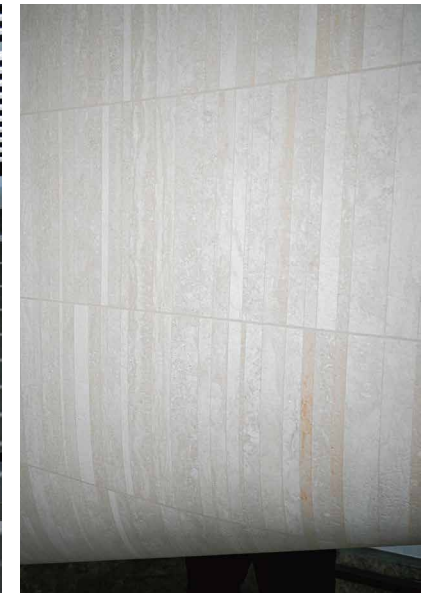
罗马黄洞
STX-ST-TR1-015

罗马咖洞
STX-ST-TR1-032

规格: 1200x3000mm
Size

厚度: 2.5-3mm
Thickness

面别: 一石三面 (1 Stone 3 Face)
Surface



Mineral Mood

矿物氛围

Roman White
Travertine



烟雨米白洞
STX-ST-TR1-004

Roman Yellow
Travertine



烟雨深灰
STX-ST-TR1-005

Roman Coffee
Travertine



烟雨浅灰洞
STX-ST-TR1-006

Roman White
Travertine



烟雨米黄洞
STX-ST-TR1-007

Roman Yellow
Travertine

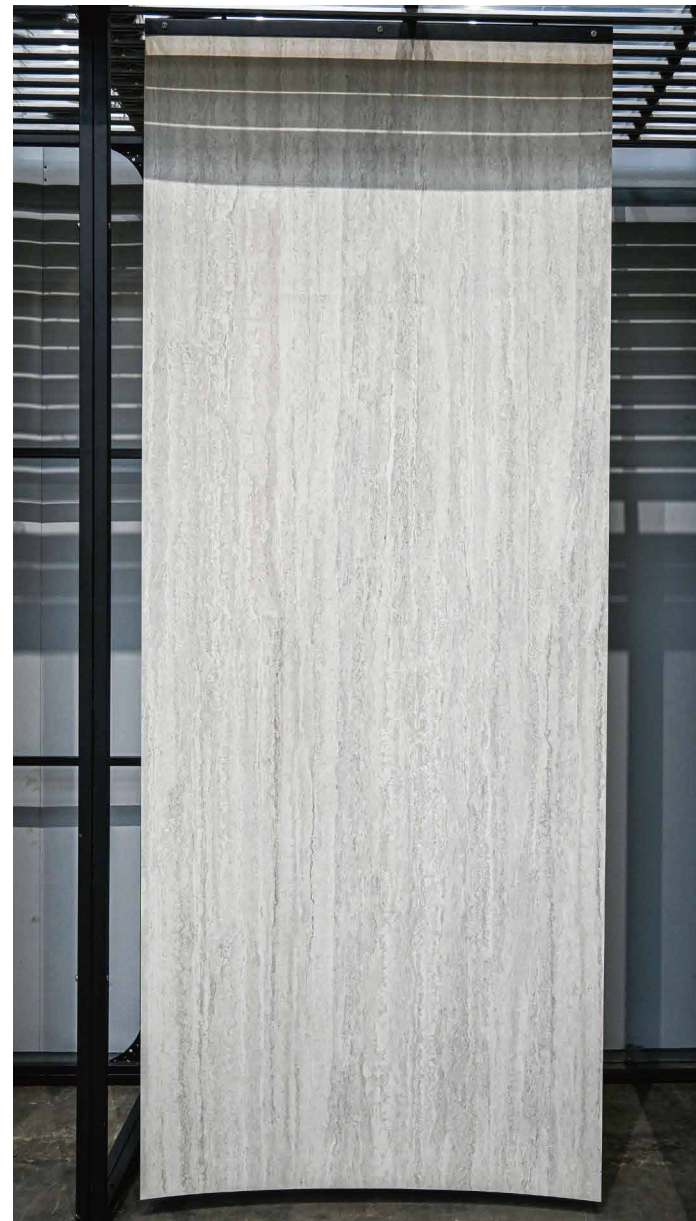


烟雨浅白
STX-ST-TR1-008

规格: 1200x3000mm
Size

厚度: 2.5-3mm
Thickness

面别: 一石三面 (1 Stone 3 Face)
Surface



Mineral Mood

矿物氛围

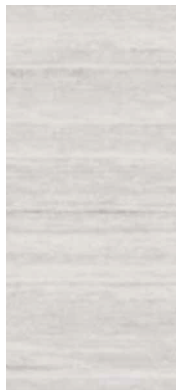
Warm Grey
Travertine



暖灰洞

STX-ST-TR1-009

Light Gray
Travertine



浅灰洞

STX-ST-TR1-010

规格: 1200x3000mm
Size

厚度: 2.5-3mm
Thickness

面别: 一石三面 (1 Stone 3 Face)
Surface



Mineral Mood

矿物氛围

Birch Fossil
Stone

Sandalwood Fossil
Stone

Oak Fossil
Stone



桦木化石
STX-ST-TR1-026

檀木化石
STX-ST-TR1-028

橡木化石
STX-ST-TR1-027

规格: 1200x3000mm
Size

厚度: 2.5-3mm
Thickness

面别: 一石三面 (1 Stone 3 Face)
Surface



Mineral Mood

矿物氛围

Jade Light Grey
Travertine

Jade Warm Grey
Travertine

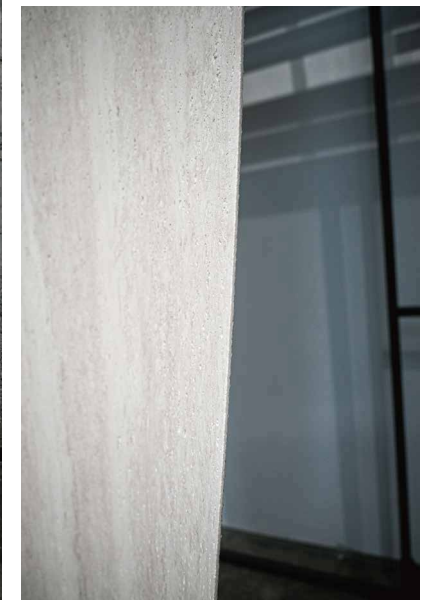
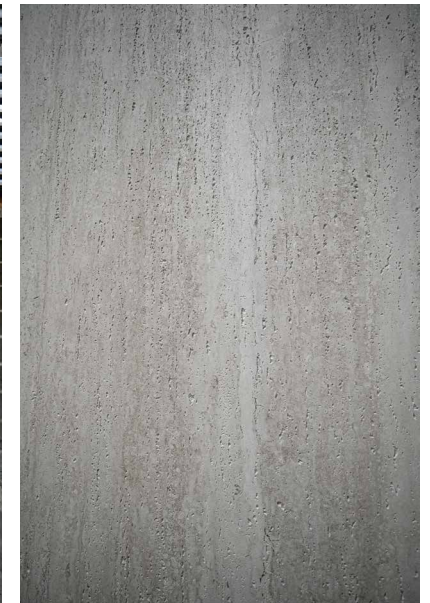
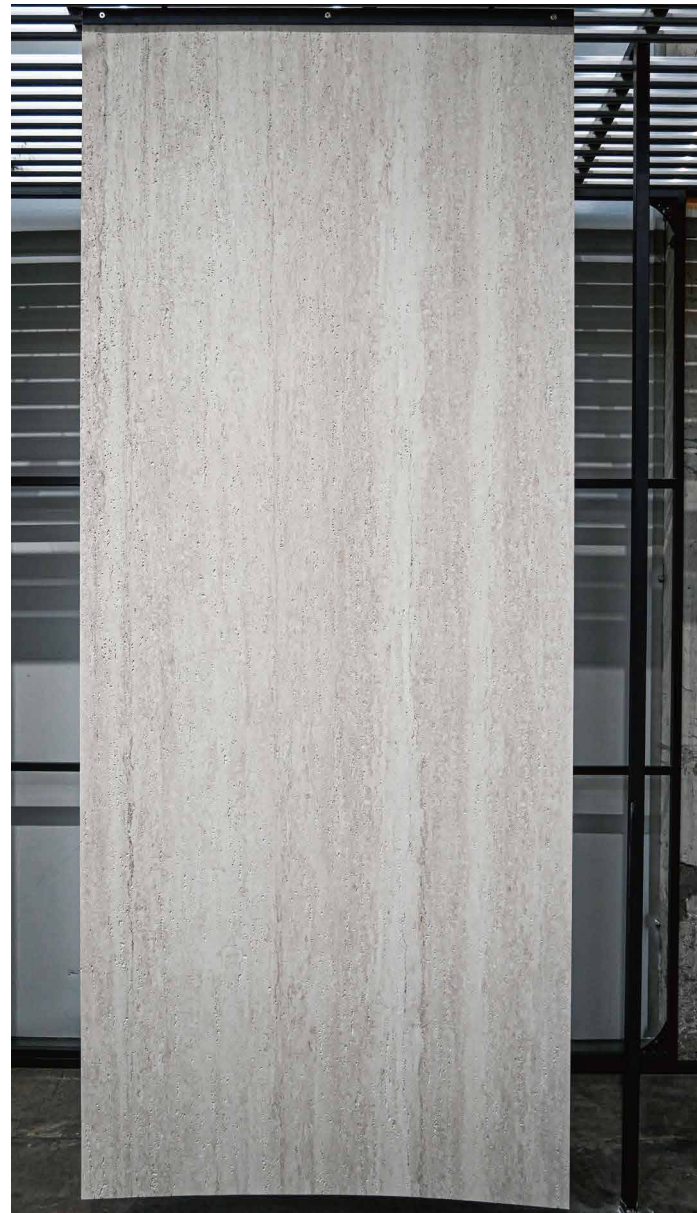


白玉浅灰洞
STX-ST-TR1-010

百玉暖灰
STX-ST-TR1-009

规格: 1200x3000mm
Size
厚度: 2.5-3mm
Thickness

面别: 一石三面 (1 Stone 3 Face)
Surface



Mineral Mood

矿物氛围

Silver Grey
Sandstone

Silver Grey
Beige

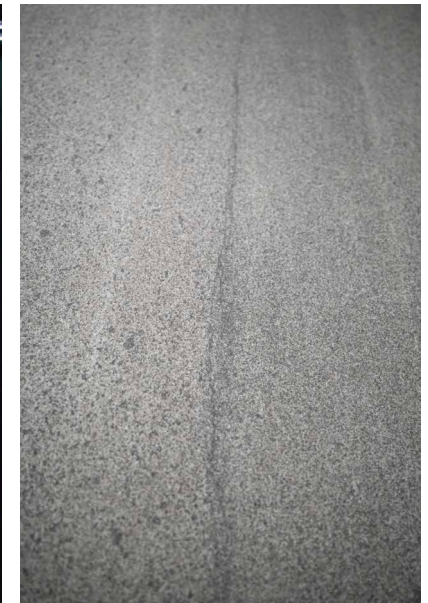


银灰砂岩
STX-ST-TR1-041

银灰米黄
STX-ST-TR1-042

规格: 1200x3000mm
Size
厚度: 2.5-3mm
Thickness

面别: 一石三面 (1 Stone 3 Face)
Surface



Mineral Mood

矿物氛围

Warm Brown
Travertine



暖棕洞
STX-ST-TR1-029

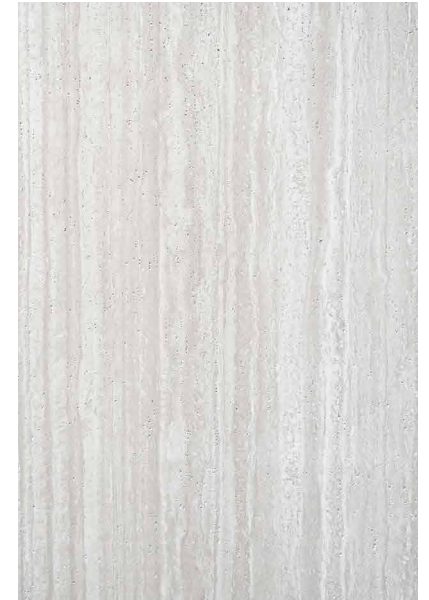
Warm Brown
Travertine



暖棕洞
STX-ST-TR2-029

规格: 1200x3000mm
Size
厚度: 2.5-3mm
Thickness

面别: 一石一面 (1 Stone 1 Face)
Surface



Innovative Design

Material Development

Mineral Mood

矿物氛围

银灰洞

Silver Grey Travertine



规格: 1200x3000mm

Size

厚度: 2.5-3mm

Thickness

面别: 一石一面 (1 Stone 1 Face)

Surface

型号: STX-ST-TR1-016

Model

浅棕洞

Light Brown Travertine



规格: 1200x3000mm

Size

厚度: 2.5-3mm

Thickness

面别: 一石一面 (1 Stone 1 Face)

Surface

型号: STX-ST-TR1-030

Model

云雾洞

Cloud Mist Travertine



规格: 1200x3000mm

Size

厚度: 2.5-3mm

Thickness

面别: 一石三面 (1 Stone 3 Face)

Surface

型号: STX-ST-TR1-011

Model

砾石岩

Gravel Rock



规格: 1200x3000mm

Size

厚度: 2.5-3mm

Thickness

面别: 一石两面 (1 Stone 2 Face)

Surface

型号: STX-ST-TR1-023

Model

Innovative Design

Material Development

Mineral Mood

矿物氛围

浅灰纱洞

Light Grey Sheer Travertine



规格: 1200x3000mm

Size

厚度: 2.5-3mm

Thickness

面别: 一石三面 (1 Stone 3 Face)

Surface

型号: STX-ST-TR1-012

Model

深灰纱洞

Dark Grey Sheer Travertine



规格: 1200x3000mm

Size

厚度: 2.5-3mm

Thickness

面别: 一石三面 (1 Stone 3 Face)

Surface

型号: STX-ST-TR1-013

Model

象牙暖棕洞

Light Grey Sheer Travertine



规格: 1200x3000mm

Size

厚度: 2.5-3mm

Thickness

面别: 一石三面 (1 Stone 3 Face)

Surface

型号: STX-ST-TR1-029

Model

象牙浅棕洞

Dark Grey Sheer Travertine



规格: 1200x3000mm

Size

厚度: 2.5-3mm

Thickness

面别: 一石三面 (1 Stone 3 Face)

Surface

型号: STX-ST-TR1-030

Model

Mineral Mood

矿物氛围



Gravel Rock

黄礁石

规格: 1200x3000mm

Size

厚度: 3-3.5mm

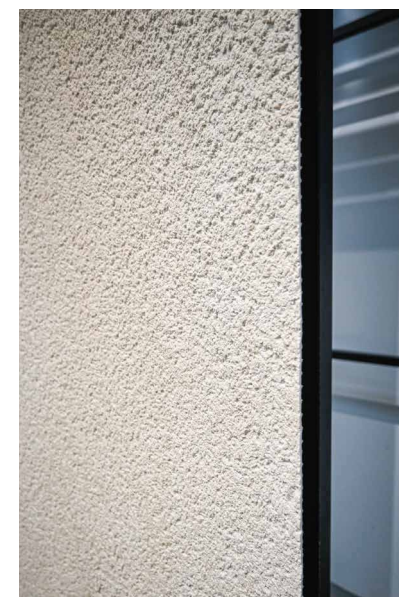
Thickness

面别: 一石四面 (1 Stone 4 Face)

Surface

型号: STX-ST-RE-002

Model



Mineral Mood

矿物氛围

Andesite
Off-White

Andesite
Light Yellow

Andesite
French Light Brown

Andesite
French Pink



英安岩-米白
STX-ST-GR1-004

英安岩-浅黄
STX-ST-GR1-005

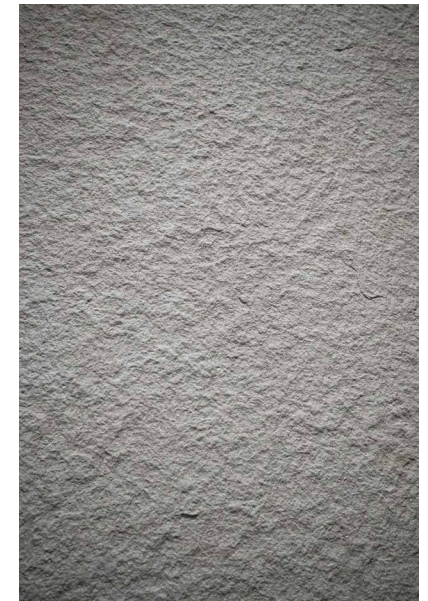
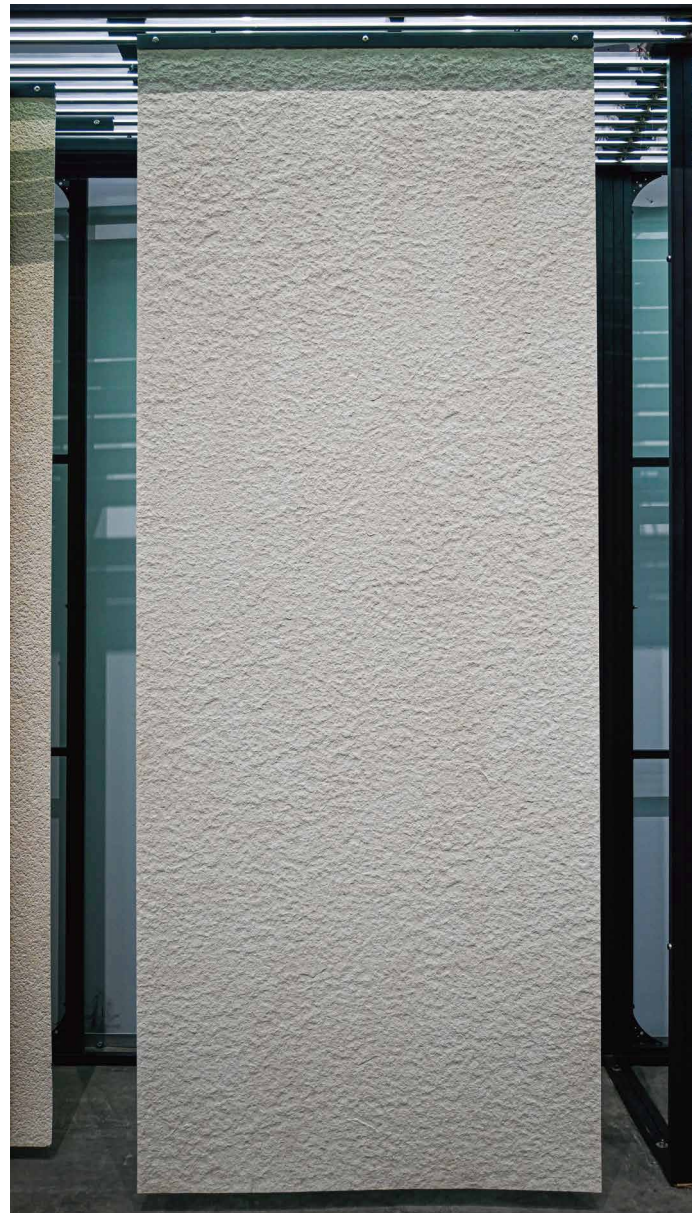
英安岩-法国浅棕
STX-ST-GR1-002

英安岩-法国粉
STX-ST-GR1-003

规格: 1200x3000mm
Size

厚度: 1-4mm
Thickness

面别: 一石一面 (1 Stone 1 Face)
Surface



Mineral Mood

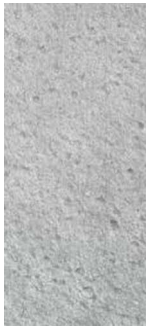
矿物氛围

Rophi Rock

Rophi Rock
Yellow

Rophi Rock
Grey

Rophi Rock
Black



罗非岩
STX-ST-RO-001

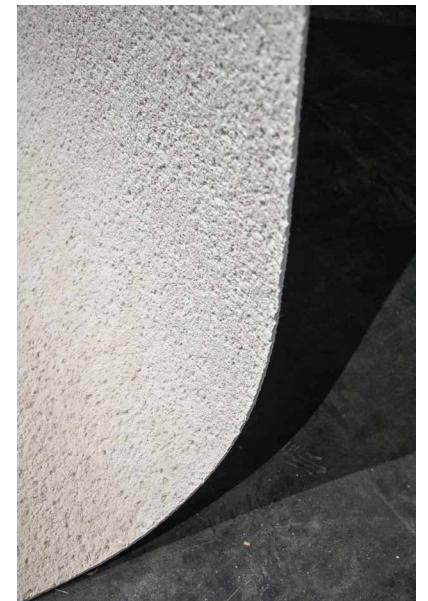
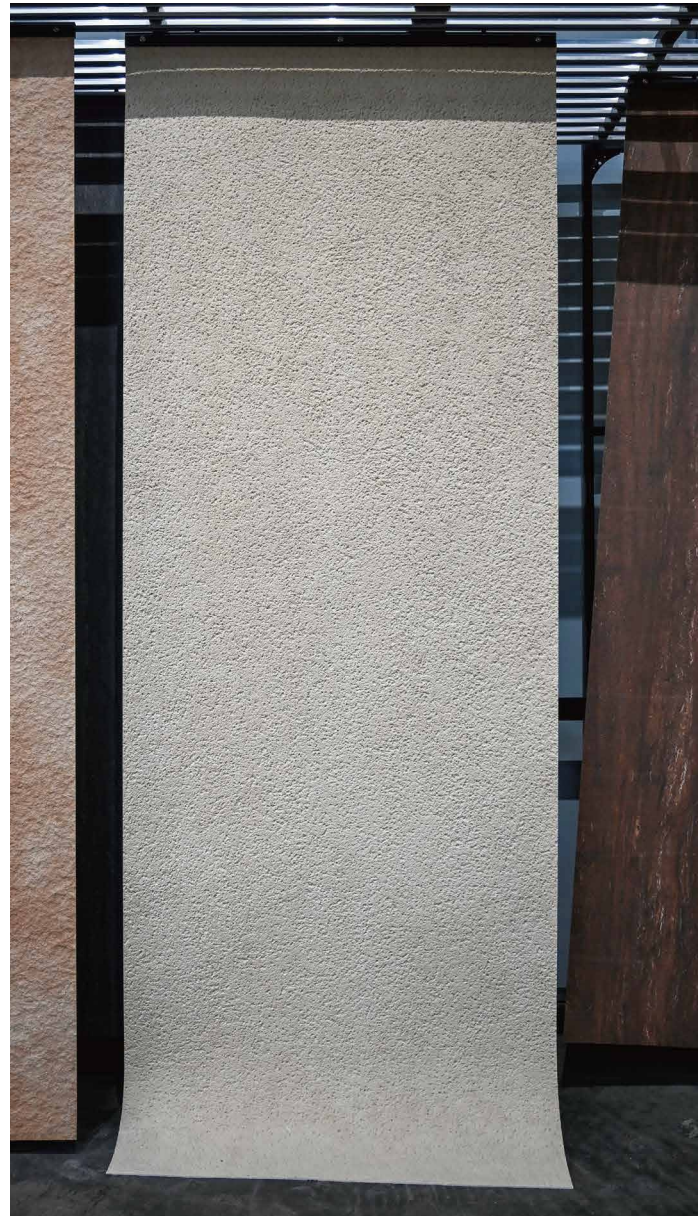
罗非岩-黄
STX-ST-RO-002

罗非岩-灰
STX-ST-RO-004

罗非岩-黑
STX-ST-RO-005

规格: 1200x3000mm
Size
厚度: 3-3.5mm
Thickness

面别: 一石四面 (1 Stone 4 Face)
Surface



Mineral Mood

矿物氛围

纯白天山岩
Pure White Tianshan Rock



规格: 1200x2400mm
Size 600x2400
厚度: 2-2.5mm
Thickness
面别: 一石一面 (1 Stone 1 Face)
Surface
型号: STX-ST-GR2-001
Model

米白天山岩
Off-white Tianshan Rock



规格: 1200x2400mm
Size
厚度: 2-2.5mm
Thickness
面别: 一石一面 (1 Stone 1 Face)
Surface
型号: STX-ST-GR2-002
Model

风化石
Gravel Rock



规格: 1200x3200mm
Size
厚度: 3-3.5mm
Thickness
面别: 一石四面 (1 Stone 4 Face)
Surface
型号: STX-ST-TE-001
Model

Mineral Mood

矿物氛围



Axe-Faced Stone

斧开石

规格: 2998x1135mm

Size

厚度: 1-1.1mm

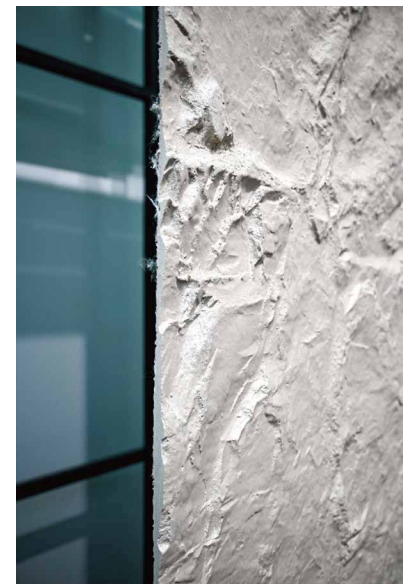
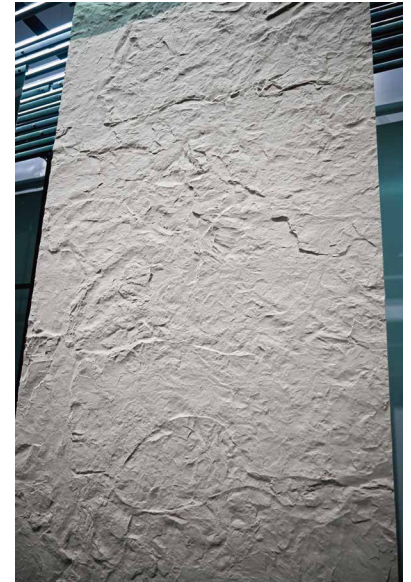
Thickness

面别: 一石一面 (1 Stone 1 Face)

Surface

型号: STX-ST-AX-001

Model



Mineral Mood

矿物氛围

小山丘
Axe-Faced Stone



规格: 1200x3000mm
Size
厚度: 1-8mm
Thickness
面别: 一石一面 (1 Stone 1 Face)
Surface
型号: STX-ST-HI-001
Model

星月石
Star & Moon Stone



规格: 1200x3200mm
Size
厚度: 2-8mm
Thickness
面别: 一石一面 (1 Stone 1 Face)
Surface
型号: STX-ST-ME-001
Model

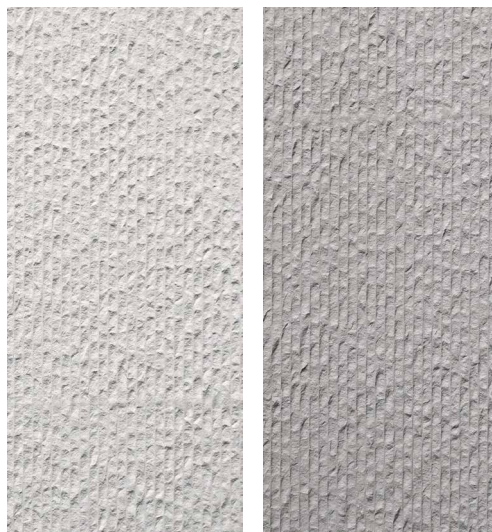
砂质粘土
Sandy clay



规格: 1200x3000mm
Size
厚度: 3-3.5mm
Thickness
面别: 一石一面 (1 Stone 1 Face)
Surface
型号: STX-ST-SA-001
Model

Mineral Mood

矿物氛围



Veined Stonec

纹线石

规格: 3000x600mm

Size

厚度: 1-8mm

Thickness

面别: 一石一面 (1 Stone 1 Face)

Surface

型号: STX-ST-VE-001/STX-ST-VE-002

Model

颜色: 米白/深灰 (off-white / Dark Gray)

Color



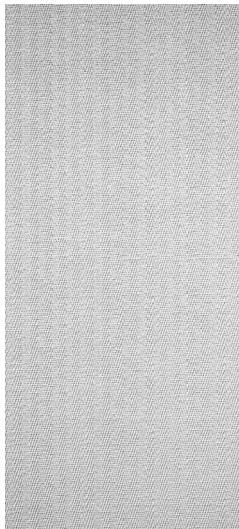
Fabric Mood

织物情感

02

Fabric Mood

织物情感



Off-white Linen Weave

米白麻编

规格：1200x3000mm

Size

厚度：2-5mm

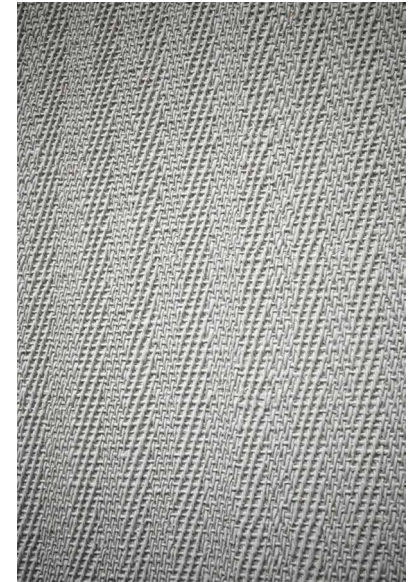
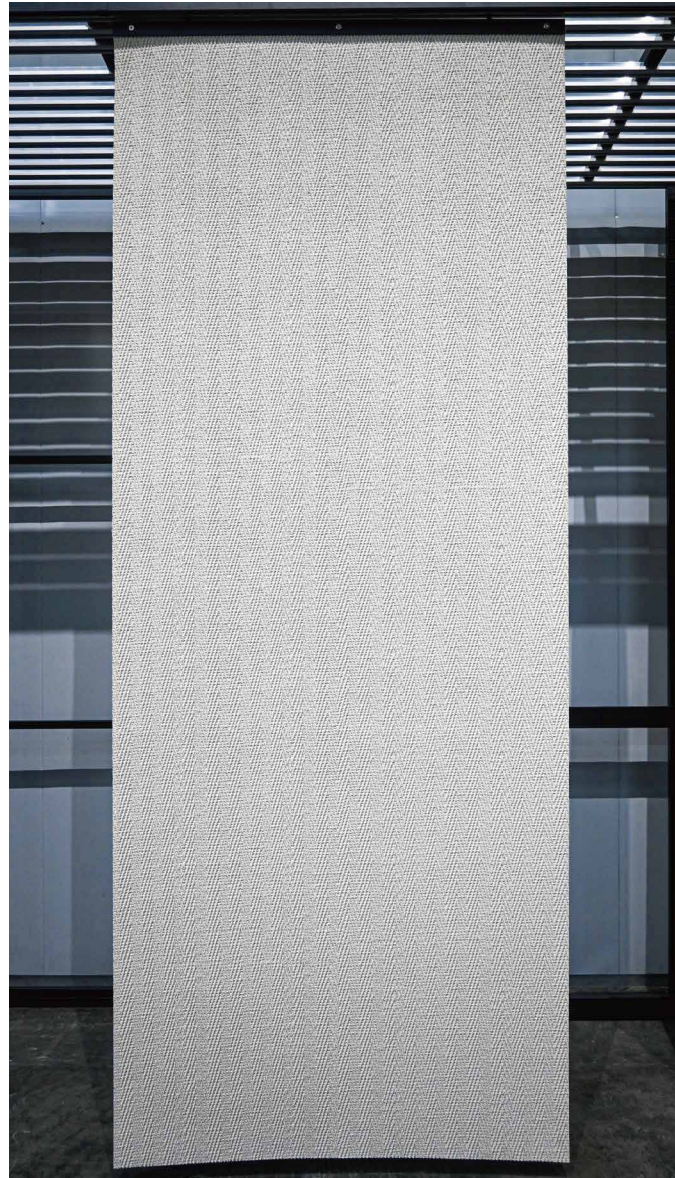
Thickness

面别：一石一面 (1 Stone 1 Face)

Surface

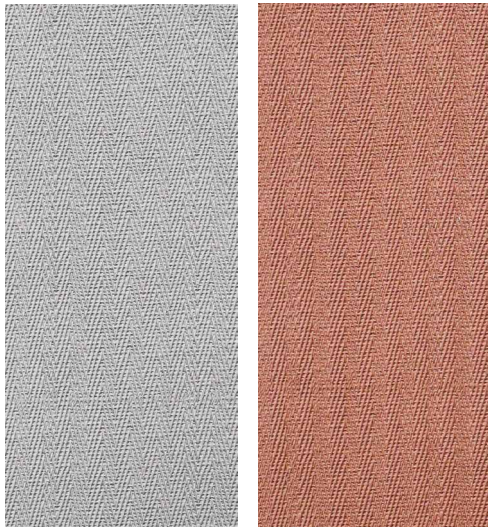
型号：STX-FI-WO-001

Model



Fabric Mood

织物情感



Weave

麻编

规格: 1200x3000mm

Size

厚度: 2-5mm

Thickness

面别: 一石一面 (1 Stone 1 Face)

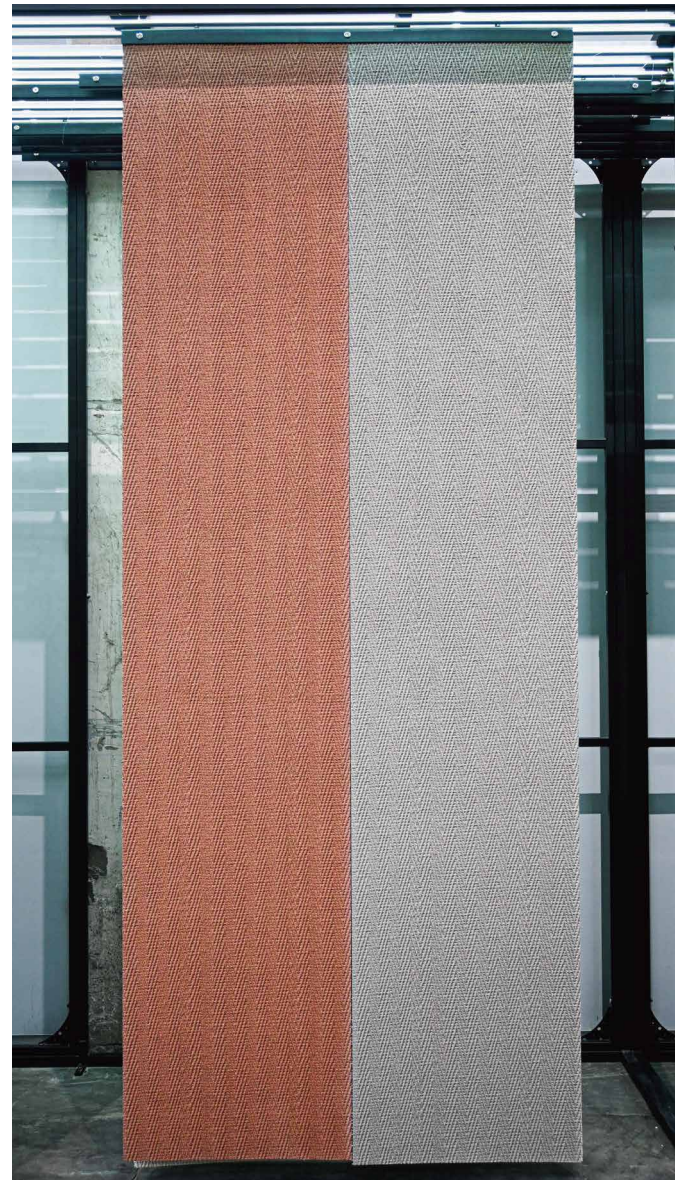
Surface

型号: STX-FI-WO-003

Model

颜色: 云灰/橘红 (Cloud Grey/ Orange Red)

Color



Nature Mood

自然物件

03

Nature Mood

自然物件



Leather Series

小羊皮-米白

规格: 1200x3000mm

Size

厚度: 2.5-3mm

Thickness

面别: 一石一面 (1 Stone 1 Face)

Surface

型号: STX-LE1-TR1-001

Model



Nature Mood

自然物件



Beige Lambskin

小羊皮-米黄

规格: 1200x3000mm

Size

厚度: 2.5-3mm

Thickness

面别: 一石一面 (1 Stone 1 Face)

Surface

型号: STX-LE1-TR1-002

Model



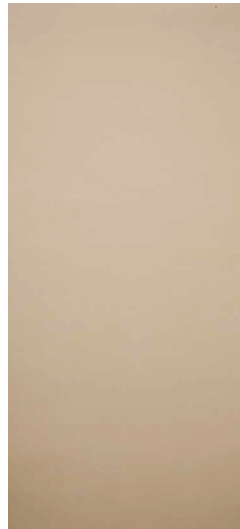
Urban Mood

都市氛围

04

Urban Mood

都市氛围



Sand Yellow Microcement

微水泥沙黄

规格: 1200x2990mm

Size

厚度: 2.7-3.2mm

Thickness

面别: 一石一面 (1 Stone 1 Face)

Surface

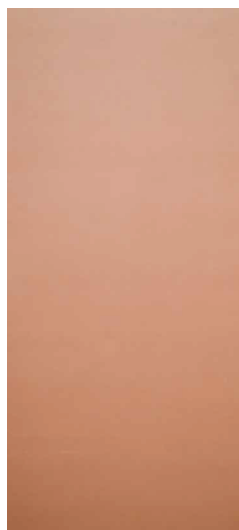
型号: STX-AR-MO-001

Model



Urban Mood

都市氛围



Rust Orange Microcement

微水泥橘红

规格: 1200x3000mm

Size

厚度: 2.7-3.2mm

Thickness

面别: 一石一面 (1 Stone 1 Face)

Surface

型号: STX-IN-MI-004

Model



Urban Mood

都市氛围



Ink Green Microcement

微水泥墨绿

规格: 1200x3000mm

Size

厚度: 2.7-3.2mm

Thickness

面别: 一石一面 (1 Stone 1 Face)

Surface

型号: STX-IN-MI-006

Model



Urban Mood

都市氛围



Black Microcement

微水泥黑

规格: 1200x3000mm

Size

厚度: 2.7-3.2mm

Thickness

面别: 一石一面 (1 Stone 1 Face)

Surface

型号: STX-IN-MI-007

Model



Urban Mood

都市氛围

微水泥橙色

Orange Microcement



规格: 1200x3000mm
Size
厚度: 2.7-3.2mm
Thickness
面别: 一石一面 (1 Stone 1 Face)
Surface
型号: STX-IN-MI-003
Model

微水泥浅绿

Light Green Microcement



规格: 1200x3000mm
Size
厚度: 2.7-3.2mm
Thickness
面别: 一石一面 (1 Stone 1 Face)
Surface
型号: STX-IN-MI-005
Model

Urban Mood

都市氛围



Rust Brown

铁锈棕

规格: 1200x3000mm

Size

厚度: 2.5-3mm

Thickness

面别: 一石一面 (1 Stone 1 Face)

Surface

型号: STX-IN1-TR1-002

Model



Urban Mood

都市氛围



Rust Orange

铁锈橙

规格: 1200x3000mm

Size

厚度: 2.5-3mm

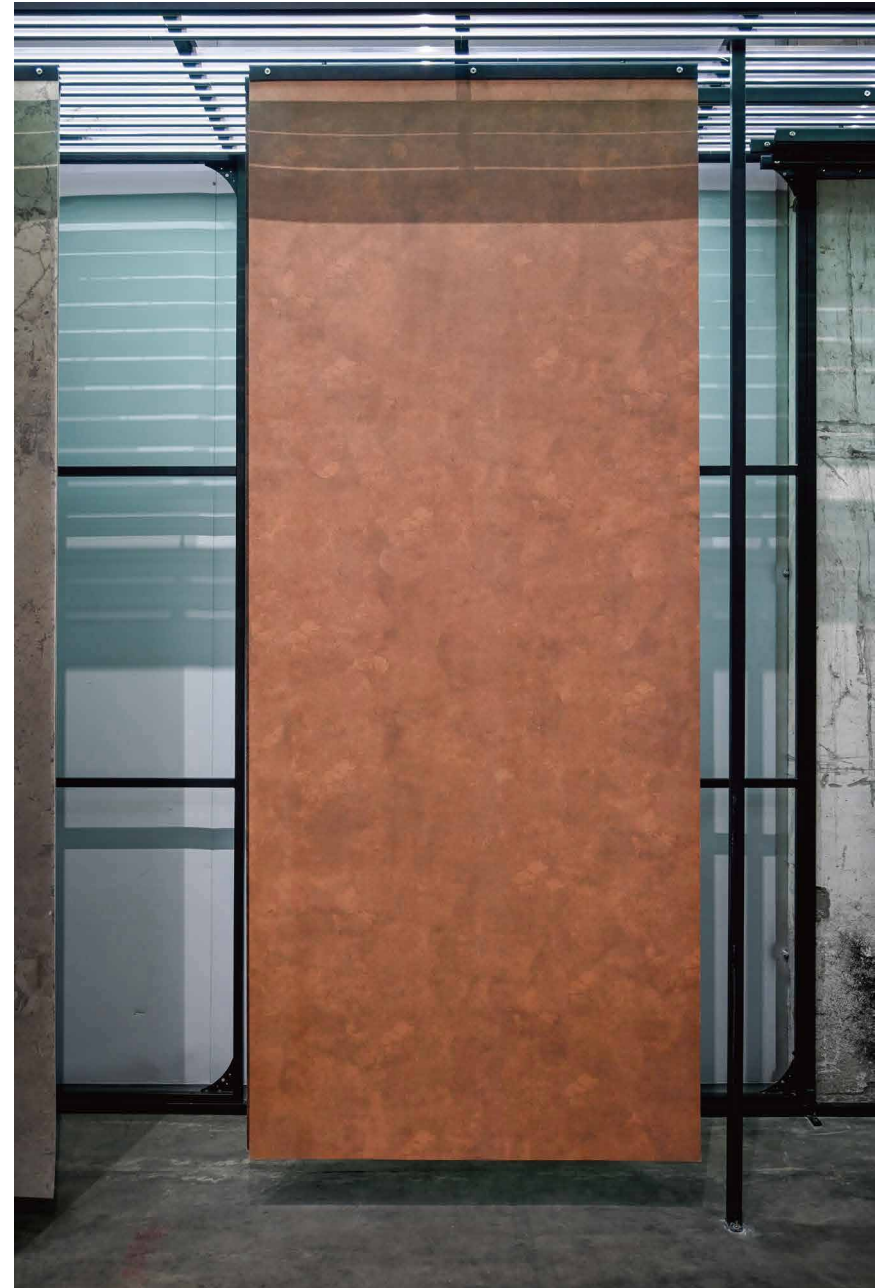
Thickness

面别: 一石一面 (1 Stone 1 Face)

Surface

型号: STX-IN-TR1-001

Model



Urban Mood

都市氛围



Red Oxidized Metal

氧化金属红

规格: 1200x3000mm

Size

厚度: 2.5-3mm

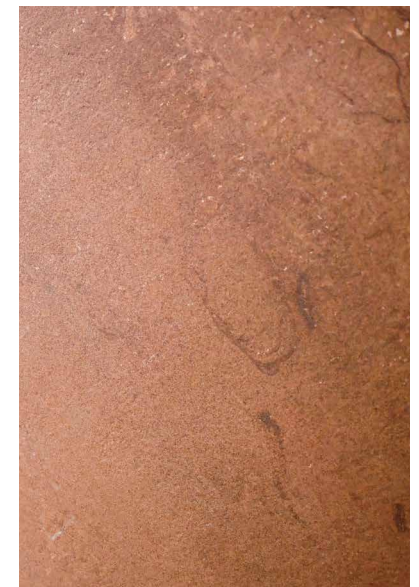
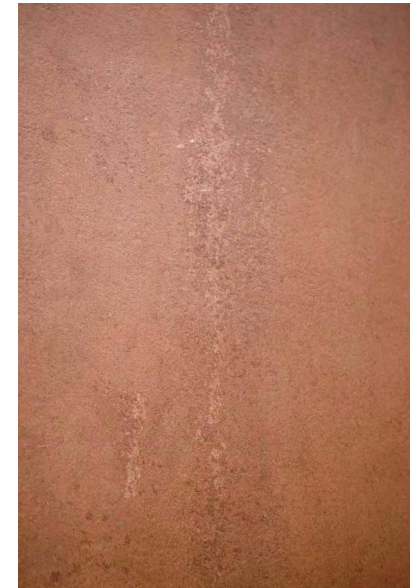
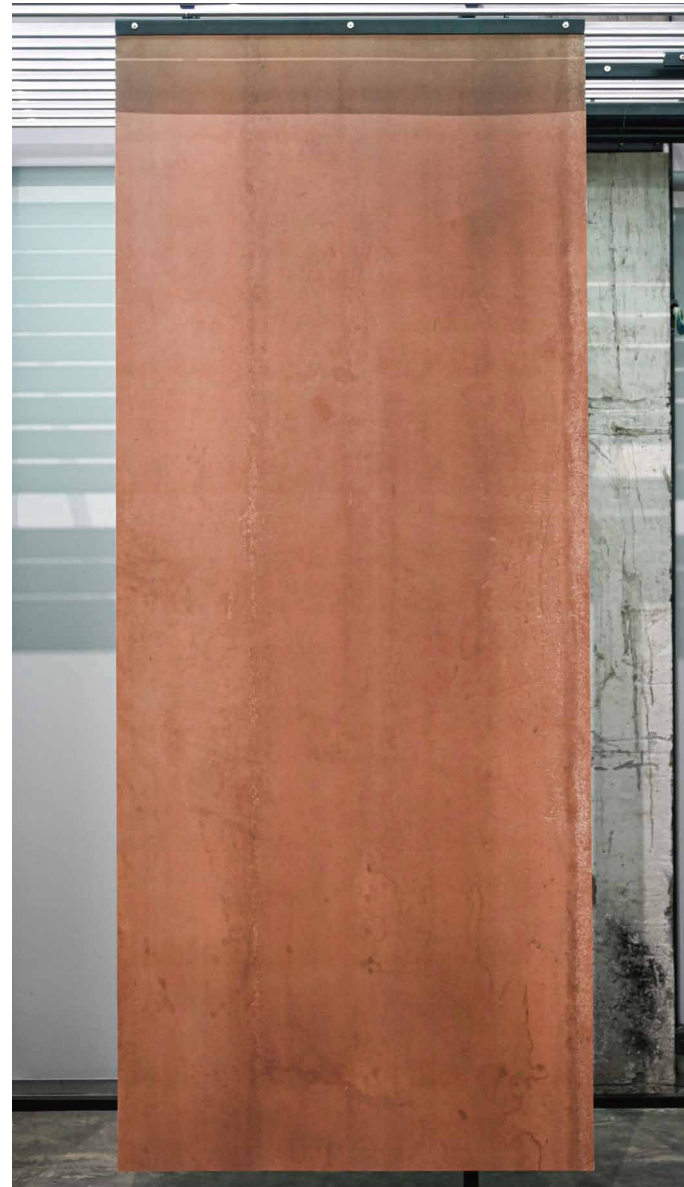
Thickness

面别: 一石一面 (1 Stone 1 Face)

Surface

型号: STX-IN1-TR1-001

Model



Creative Mood

艺术灵感

05

Creative Mood

艺术灵感



Pure White Mosaic

纯白马赛克

规格: 1200x2990mm

Size

厚度: 1-6.5mm

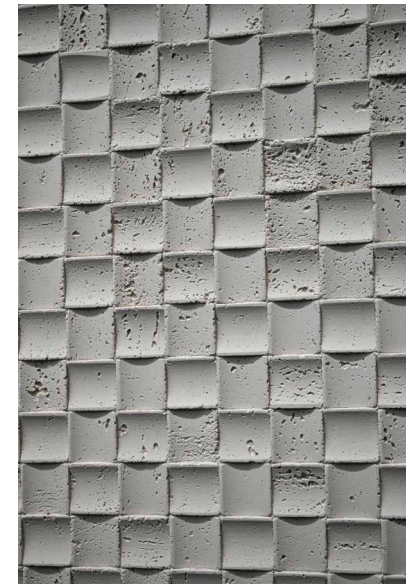
Thickness

面别: 一石一面 (1 Stone 1 Face)

Surface

型号: STX-AR-MO-001

Model



Creative Mood

艺术灵感



Pure Black Mosaic

纯黑马赛克

规格: 1200x2990mm

Size

厚度: 1-6.5mm

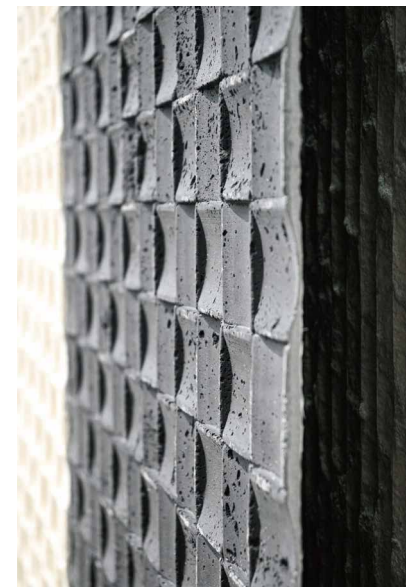
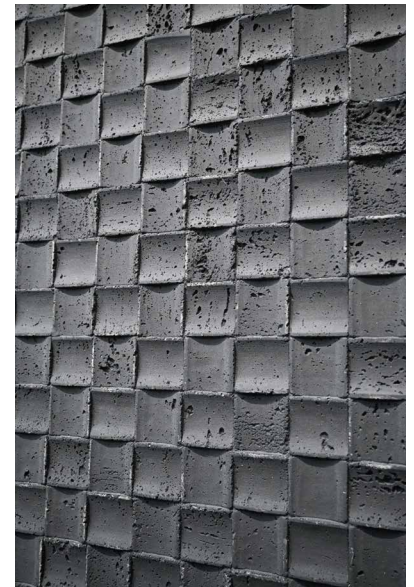
Thickness

面别: 一石一面 (1 Stone 1 Face)

Surface

型号: STX-AR-MO-002

Model



Creative Mood

艺术灵感

罗马小圆柱
Convex Roman Colonnette



规格: 3000x608/1204x606mm
Size
厚度: 1-8mm
Thickness
面别: 一石三面 (1 Stone 3 Face)
Surface
型号: STX-AR-RM-001
Model

水波纹
Water Ripple

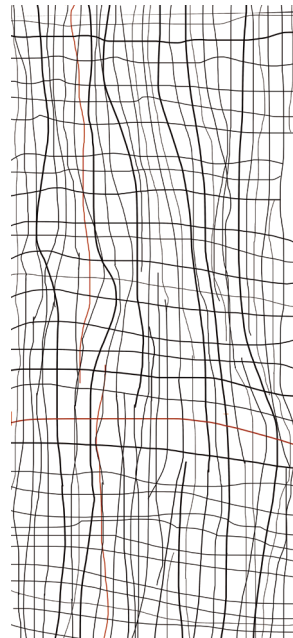


规格: 1200x3000mm
Size
厚度: 1-6mm
Thickness
面别: 一石两面 (1 Stone 2 Face)
Surface
型号: STX-AR-WR-001
Model

Creative Mood

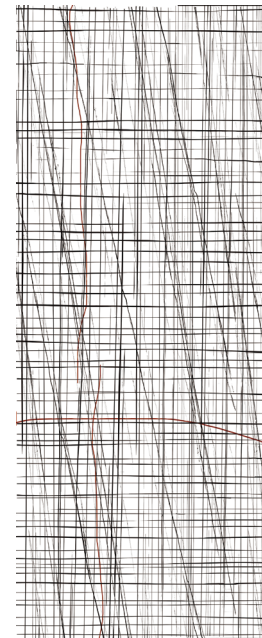
艺术灵感

墨编织石
Ink Woven Stone



规格: 1200x2400mm
Size
厚度: 3-3.3mm
Thickness
面别: 一石一面 (1 Stone 1 Face)
Surface
型号: STX-FO-TR2-001
Model

墨编织石
Ink Woven Stone



规格: 1200x2400mm
Size
厚度: 3-3.3mm
Thickness
面别: 一石一面 (1 Stone 1 Face)
Surface
型号: STX-FO-TR2-001
Model

Color Palette

色系

06

Innovative Design

Material Development

White-Grey Neutral Tones
白灰中性色系

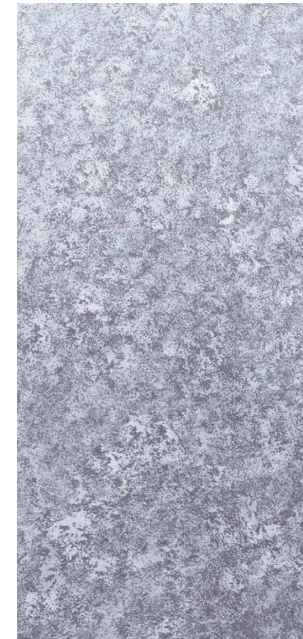
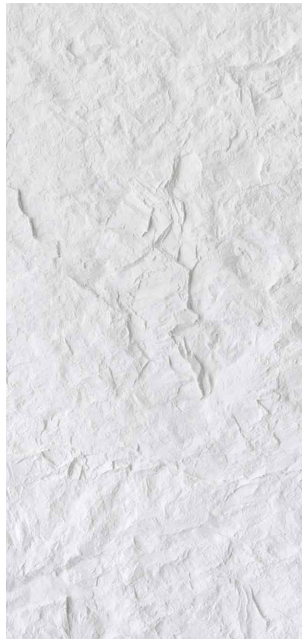
Empty Mountain

Plain Mirror

Frosty Isle

Light Breeze

Misty haze



空山

素镜

霜屿

微岚

烟岚

Innovative Design

Material Development

Dark Grey & Black Tones

黑灰深色系

Dusk Haze

Deep Texture

Mysterious Dark

Nightscape

Golden Ember



暮层

沉象

玄序

夜象

金烬

Innovative Design

Material Development

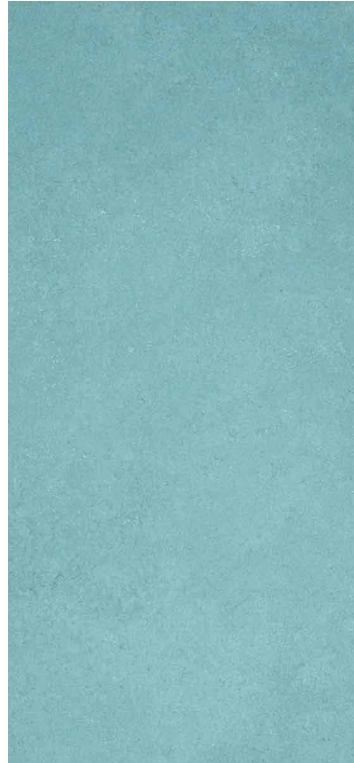
Cool Blue Tones

蓝色冷调系

Mist Breath

Teal Drift

Liquid Mirror



岚息

青洄

水镜

Innovative Design

Material Development

Cool Blue Tones
蓝色冷调系

Ice Glaze

Abyssal Blue

Luminous Blue



冰釉

沧溟

曜蓝

Oxidized Blue - Green Tones

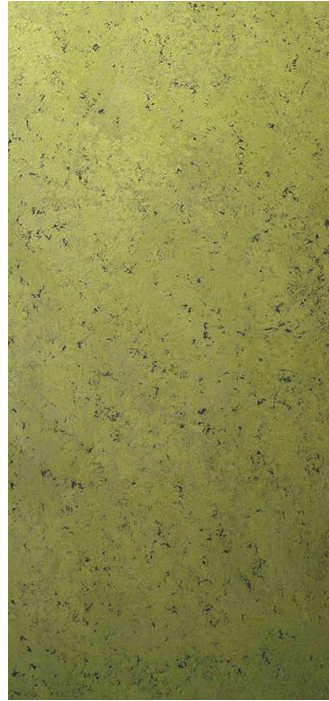
青绿氧化系

Ink Mirror



黛镜

Green Sprout



青芽

Brushed Teal



拂青

Fluid Sequence



流序

Innovative Design

Material Development

Oxidized Blue - Green Tones

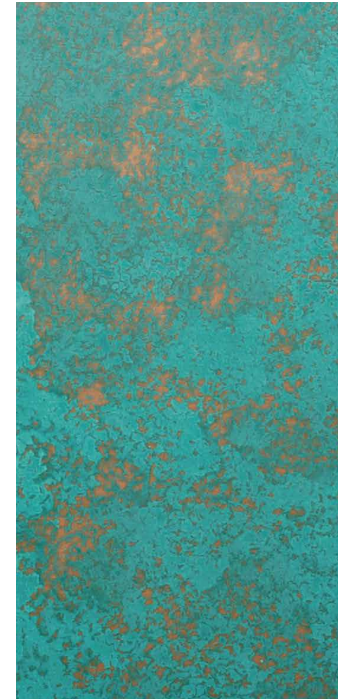
青绿氧化系

Glowing Flow

China Blue

Jade Radiance

Copper Haze



琉光

瓷青

翠曜

铜岚

Innovative Design

Material Development

Gold Tones 金色系

Sand Gold

Frost Glow

Sun Glow

Gold Glow



沙金

凜光

日暉

金曜

Innovative Design

Material Development

Warm Gold - Brown Tones

金棕暖色系

Curved Light

Amber Realm

Vintage Amber

Ochre Gold



曲光

琥境

旧琥

赭金

Innovative Design

Material Development

Red & Orange Tones

红橙色系

Sunrise Glow



朝霞

Crimson Pomegranate



丹榴

Deep Crimson



深绛

Terracotta



赤陶

Innovative Design

Material Development

Red & Orange Tones

红橙色系

Crimson Shadow

Orange Afterglow

Flowing Flame



朱影

橘照

流焰

Innovative Design

Material Development

Rust Red-Brown Tones

红棕锈色系

Mottled Copper

Rusty

Eroded Realm

Rust Sequence

Vintage Copper



斑铜

赤锈

蚀界

锈序

旧铜

Innovative Design

Material Development

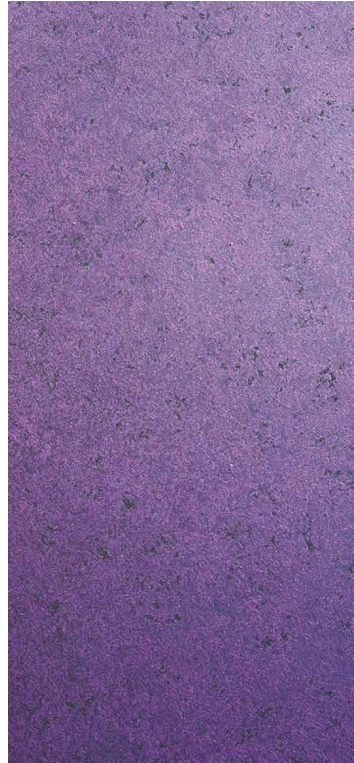
Pink & Violet Art Tones

粉紫艺术系

Sakura Moon

Orchid Purple

Violet Glow



樱月

兰紫

紫曜

Innovative Design

Material Development

THANK YOU

沃顿·岩板·瓷砖·软石

WHARTON.SLAB. CERAMIC TILE. SOFT STONE.